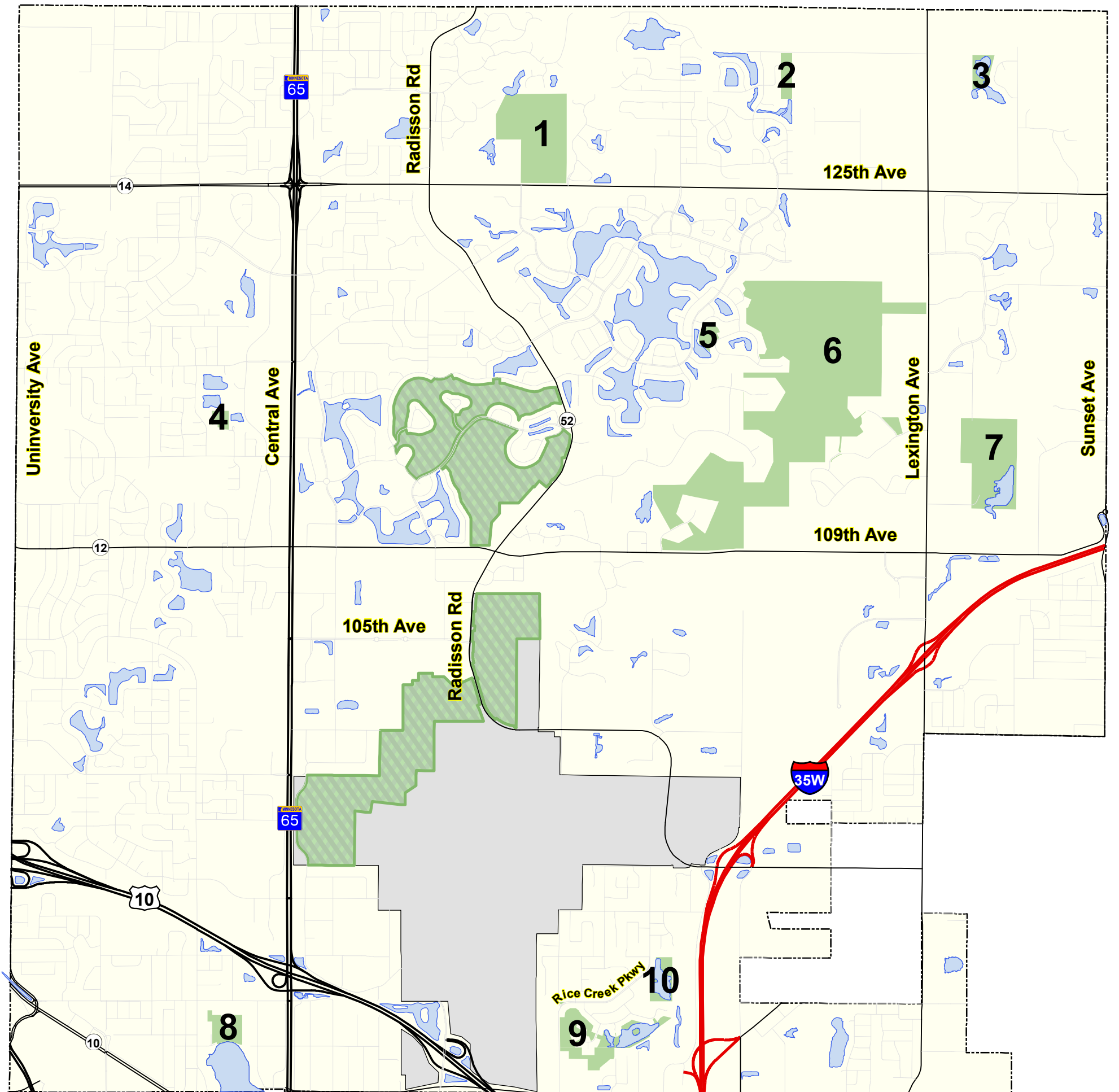


CITY OF BLAINE

OPEN SPACE



- 1 Pioneer Park, 2491 125th Ave NE (100 acres)
- 2 Legacy Woods Open Space, 3560 131st Ave NE (10.1 acres)
- 3 Sunrise Ponds Open Space, 13000 Jewell Cir NE (11.8 acres)
- 4 Hidden Ponds Park, 11465 Polk St NE (5.3 acres)
- 5 Oak Savannah, 11730 Naples Cir NE (6.7 acres)
- 6 Blaine Wetland Sanctuary, 11980 Lexington Ave NE (521.6 acres)
- 7 Lochness Park, 11121 Lexington Ave NE (89.2 acres)
- 8 Laddie Lake Park, 1051 87th Ave NE (15.1 acres)
- 9 Kane Meadows South, Southwest of 2946 Rice Creek Pkwy NE (12.5 acres)
- 10 Kane Meadows North, East of 2946 Rice Creek Pkwy NE (17.6 acres)

Map Created by: City of Blaine GIS
Map Date: March, 2020

Disclaimer: This document has been compiled using information gathered from various governmental offices and other sources and is to be used for reference purposes only. Every effort has been made to make sure the completeness and accuracy on this document. The City of Blaine does not represent that the data can be used for exact measurement of distance or direction or precision in the depiction of geographic features. If errors or discrepancies are found, please contact (763) 717-2639.

